

# 10 TRENDS

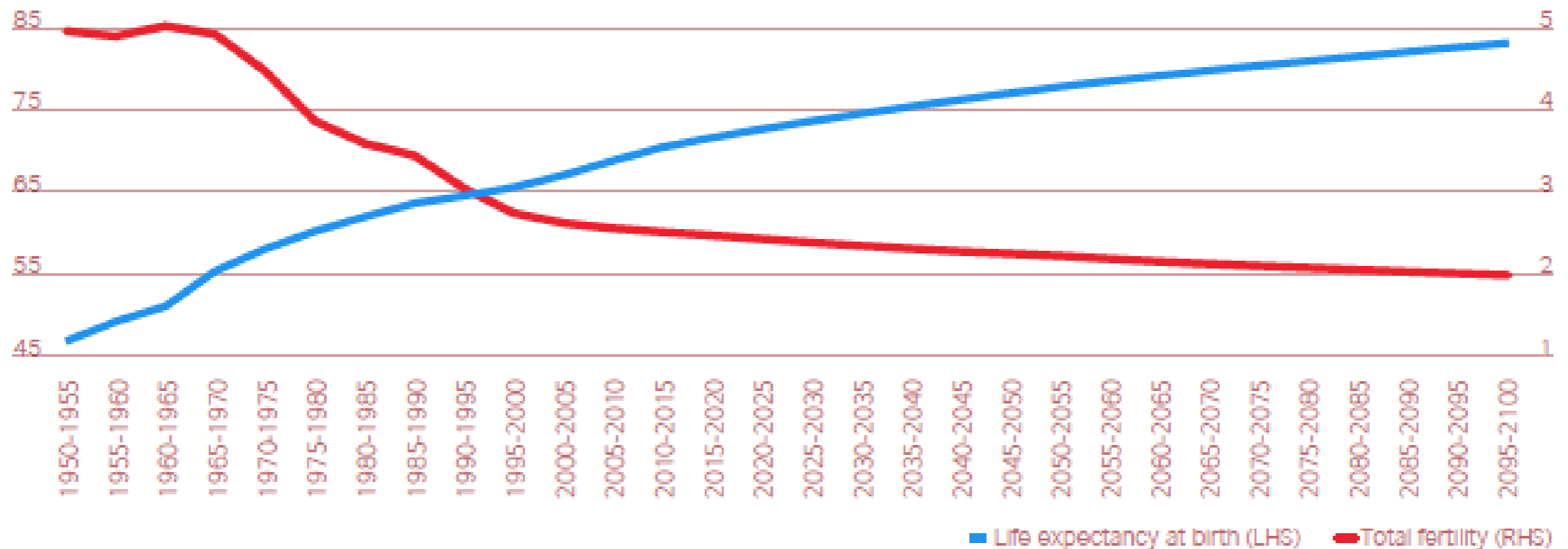
Tracking transformative changes in tertiary education

Colm McGivern  
British Council  
South Africa

10

# Shifting Global Demographics: Aging populations drag, while Africa promises human capital

Global life expectancy and total fertility rate, 1950-2100



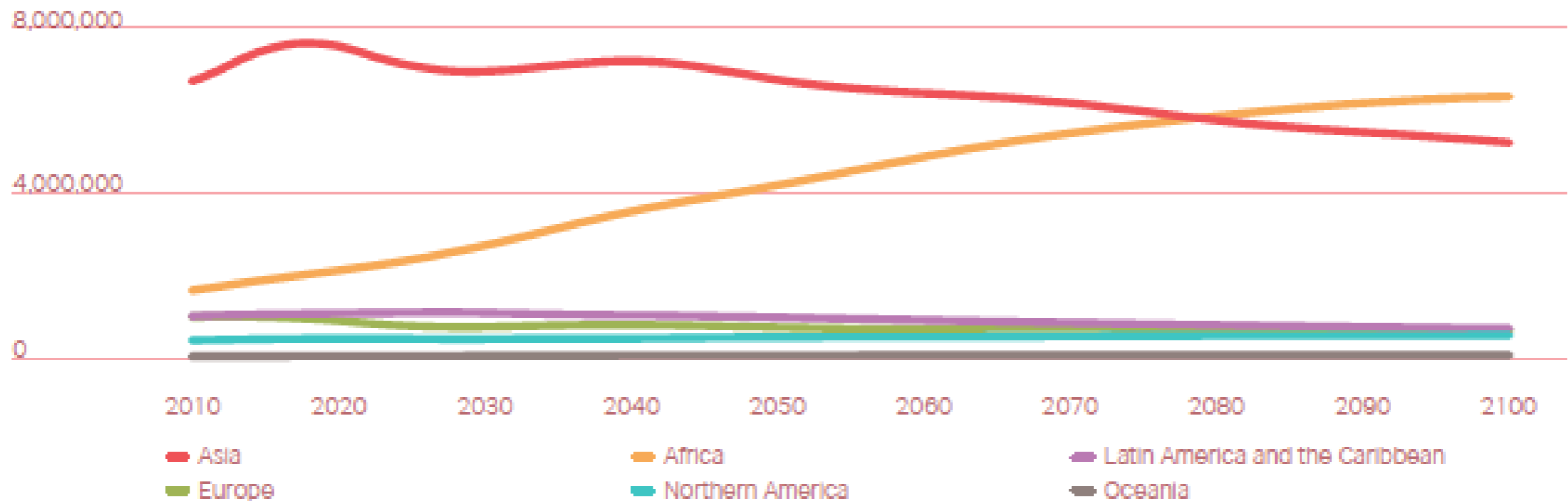
Source: UN Population Division

9

# Expansion of Education for all:

Progress towards the MDGs yields further opportunities

Youth (aged 15-24) population projections by region, 2010-2100



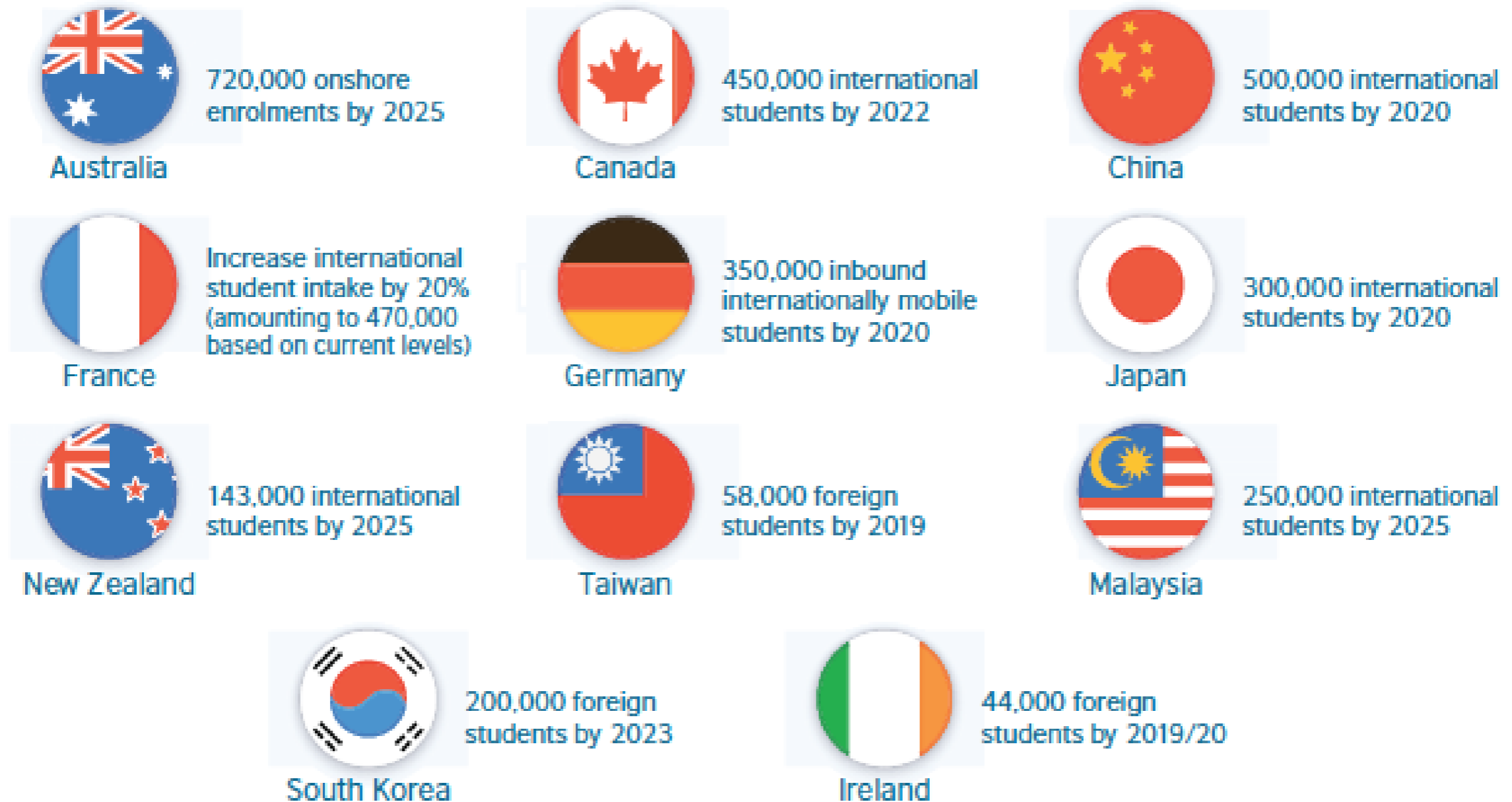
Source: UN Population Division



# National Internationalisation strategies:

Countries link international education strategies to trade and development

## Selected international student recruitment targets







## **Distribution of national education funding:**

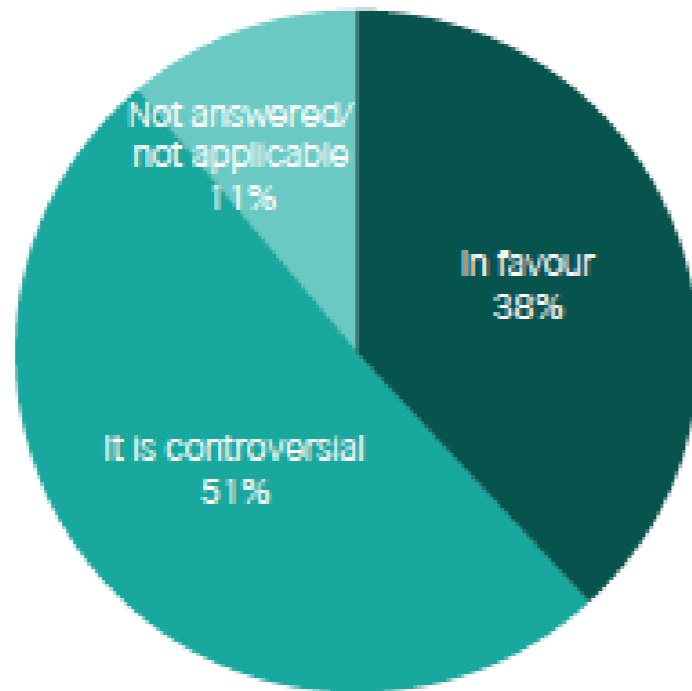
Allocation of local education funding impacts in international student mobility



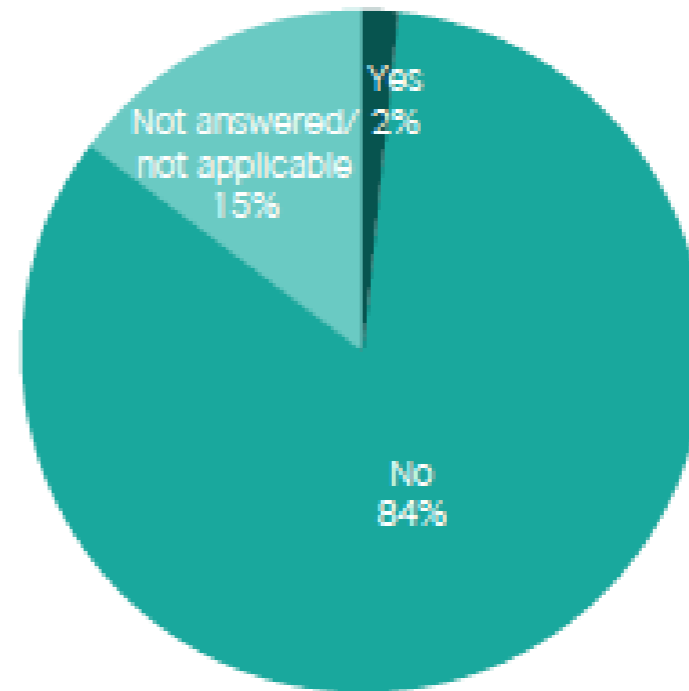
6

# Impact of English

Is public opinion in favour of EMI?



Are there enough qualified EMI teachers?



Source: British Council (from *English as a medium of instruction – a growing global phenomenon*)

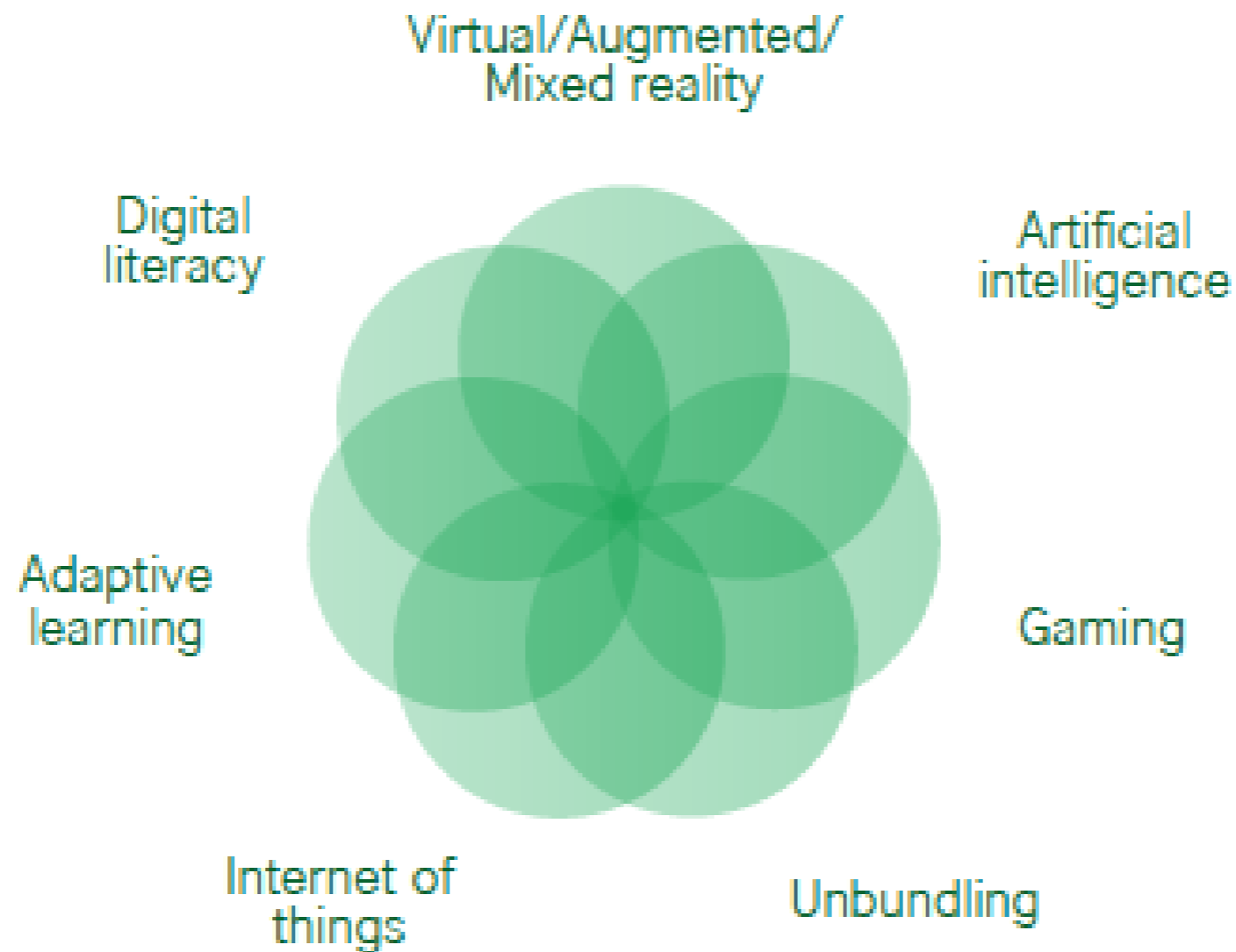
Note: These statistics are based on a 2014 British Council survey of representatives in 55 countries

5

## Ed Tech:

Technology, specifically geared towards education, transforms learning

### Educational technologies: a diversity of sectors



4

# Demand for Specific Skills:

Automation shifts workplace priorities

## 10 key skills when recruiting new employees



Sense-making



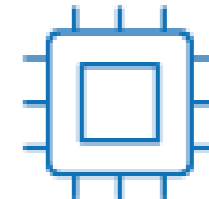
Social  
intelligence



Novel & adaptive  
thinking



Cross-cultural  
competency



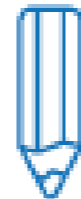
Computational  
thinking



New media  
literacy



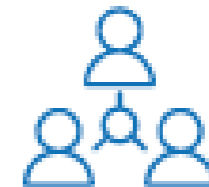
Transdisciplinarity



Design  
mindset



Cognitive load  
management



Virtual  
collaboration

Source: The Institute for the Future (ITF)

3



## **Multi-sector Co-operation:**

Corporate investment aligns with education interests



2



## **Brand and Value:**

Importance of Brand declines as definition of value grows more individualistic







## **Focus on the Student Experience:**

Heightened emphasis on the quality of the welcome



# Thank You

The End