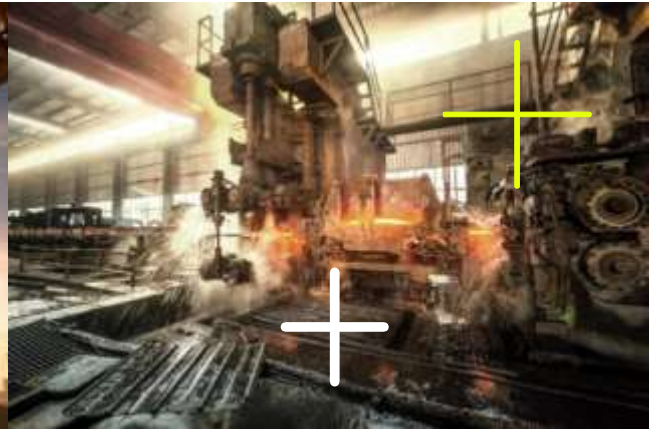




Public Private Partnership



A Hatch and African Academy case study
October 2019, Jabulile Sibanyoni

HATCH

Our global presence



+ Global Delivery Centers
150 countries
9,000 staff
\$50+ billion in projects

Our regional presence

-  **Botswana**
Gaborone
-  **India**
Gurgaon
-  **Madagascar**
-  **Russia**
St. Petersburg
Moscow
-  **South Africa**
Johannesburg
Cape Town
Durban
Port Elizabeth
East London
Mthatha
Secunda
-  **United Arab Emirates**
Abu Dhabi
Sohar
-  **United Kingdom**
London
Dorking
Manchester
Bournemouth



Our Manifesto

OUR VISION

We are passionately committed to the pursuit of a **better world** through **POSITIVE CHANGE**

OUR MISSION

TOGETHER we create **unprecedented** outcomes for our clients by **partnering with them** to develop **better ideas.**



Our **exceptional, diverse teams** combine vast engineering and business knowledge, applying them to the **world's toughest challenges.**



We build practical **SOLUTIONS** that are **SAFE**, **INNOVATIVE**, & sustainable.

OUR VALUES

We believe in exceptional ideas delivered with exceptional service.

DOING OUR  **homework**

INNOVATING  all that we do

Engaging great people who make a **difference** 

Acting *like* **OWNERS** 



Encouraging a **flat, connected organization**

Achieving **No**  harm

ENSURING **cost** effective, efficient **delivery**
 Thinking **globally**; acting **locally**

Being unconditionally **HONEST** 

nurturing long-term relationships

Living our  **commitments** with *integrity*

African Academy

- Founded in 1994
- Non-profit organisation
- Dedicated to the training of Technical skills
- Trained over 5000 students
- Industry preferred courses enabling employment
- Only fully accredited Technical training institution specialising in draughting



Governance



Board of Directors

- Adrian Young (Engineer, Consultant)
- Dr Pierre Olivier (Engineer, Director at Hatch)
- Mr C Brink (Academia, Consultant)
- Mr C Walters (Engineer, CEO at Assore Mining)
- Kubera Naidoo (MD, African Academy)
- Jabulile Sibanyoni (Human Resources Director at Hatch)
- Rudolf Hose (Engineer at AFH (PTY) Ltd)



Industry Board

- Koos van der Westhuizen (Hatch)
- Neal Johnston (Foster Wheeler)
- Phillip Barnard (GIBB)
- Total of 15 industry representatives

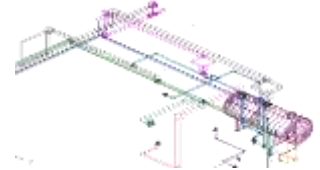


Academic Board

- C Brink (Consultant, Academia)
- E Heyns (Lecturer, African Academy)
- D Heath (Lecturer, African Academy)
- R Slier (Lecturer, African Academy)
- E Mampuru (Lecturer, African Academy)

Accreditation

- The Department of Higher Education and Training (DHET)
- The Construction Education & Training Authority (CETA)
- Umalusi – Council for Quality Assurance in General & Further Education & Training
- Quality Council for Trades and Occupations (QCTO)
- South African Institute for Draughting



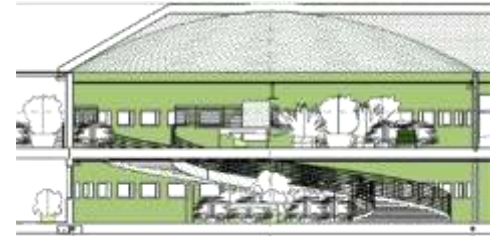
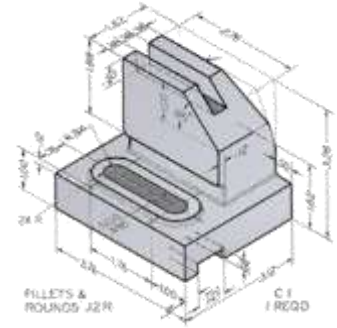
Track Record

- Pass rate aimed at 75%
- Placement rate aimed at 75%
- Supplies 50% of Draughtspersons in the country annually



Programmes Offered

- Bridging Course N2/N3
- Multi-Disciplinary Drawing Office Practice (MDDOP) N4/N5
- Structural Steelwork Detailing NQF Level 5
- Architectural Technology NQF Level 5
- Architectural Technology NQF Level 5
- Project Management NQF Level 5
- Piping Draughting NQF Level 5
- Advanced Construction/Plant & Electrical Engineering Design and Draughting



Long Term Partnering

- African Academy along with their partners jointly address the critical skills shortage in South Africa
- Funding received from partners is used to offer bursaries for the MDDOP certificate
- Current partners are Hatch, Assore, GMA



Our partnership

Trainee Designer Programme



Why...

- Builds our pipeline of Trainee Designers
- Creates employable Graduates
- You can claim your spend on BBBEE under Skills Development





+

Thank you.

For more information,
please visit www.hatch.com